



FLAMBEAU

Lighting...New Orleans Style



2011 CATALOG



FLAMBEAU

Lighting...New Orleans Style

Combining art and design with intriguing function, the designers at Flambeau have created a stunning collection of luminères.

Flambeau showcases the works of renowned New Orleans designers Paul Grüber and Elaine Gleason, as well as Baton Rouge sculptor, Benjamin Burts. Each designer and artist has united sophisticated forms and shapes with distressed finishes of gold and silver patinas to create 21st Century antiques.

With meticulous attention-to-detail and quality manufacturing, Flambeau's lamps, chandeliers, pendants, and sconces will add a touch of intrigue and whimsy to any room. Often Flambeau Lighting's designs become *the conversation piece* in the most distinctive interior environments.

Contents

<i>CHANDELIERS</i>	<i>2-25</i>
<i>LANTERNS</i>	<i>26-27</i>
<i>PENDANTS</i>	<i>28-41</i>
<i>SCONCES</i>	<i>42-57</i>
<i>TABLE & FLOOR</i>	
<i>LAMPS</i>	<i>58-91</i>
<i>ACCENTS/ACCESSORIES</i>	<i>92-95</i>
<i>DESIGNERS</i>	<i>96</i>
<i>INDEX</i>	<i>97</i>

CHAND ELLERS









“ Years of walking down Royal street in the French Quarter, seeing elegant French antiques and palm trees hidden behind garden walls, has inspired the Mignon chandelier. A subtle mix of the time worn textures and quietly elegant shapes has come together to give a hint of the secret luxury of times gone by. ”

Paul Grüer



MIGNON CH1111 CHANDELIER

CRYSTAL TEARDROPS ACCENT
ANTIQUE GOLD LEAF FINISHED
BOBECHES, AND STAR DETAILS
WITH SILVER RINGS

25"W x 29"H x 25"D
8C 60W 6' CHAIN
© 2007 PAUL GRÜER



CHANDELIERS



KRISTAL LUXE CH1040 CHANDELIER

FACETED GLASS NESTS EXTEND
OUTWARD BELOW EACH LIGHT ON
THIS CHANDELIER. SILVER BANDS
BORDER THE ANTIQUED SHADE
BODIES

30"W x 30.5"H x 30"D
6E 60W 6' CHAIN
© 2007 PAUL GRÜER
SEE PAGE 40 FOR MATCHING PENDANT
SEE PAGE 57 FOR MATCHING SCONCE



RENAISSANCE CH1110 CHANDELIER

DISTINCTIVE 5-LIGHT CHANDELIER
FEATURES CRYSTAL ACCENTS, TWIG-LIKE
FLOURISHES, GILDED LEAVES AND
ANTIQUED SHADES

34"W x 35"H x 34"D
5C 60W 6' CHAIN
© 2007 PAUL GRÜER



“One of the most fun aspects of being an artist is the opportunity to share a glimpse of the world as I see it. This Renaissance chandelier is a whimsical, witty, and somewhat wacky take on the blending of traditional design elements with memories of more than one Mardi Gras parade. Certainly not for the faint of heart, but for those who are bold in spirit!”

Paul Grüber





LOUIS

CH1035 CHANDELIER

SILVER DISTRESSING EMBODIES A
SUBTLE DESIGN ADORNED WITH
CRYSTAL-LIKE CUT GLASS

26.5"W x 31"H x 26.5"D

6C 60W 6' CHAIN

© 2007 PAUL GRÜER

MAIDEN VOYAGE

CH1016 CHANDELIER

SIX-ARM CHANDELIER ADORNED
WITH CRYSTALS AND SILVER SHADES

32"W x 35.5"H x 32"D

6C 60W 6' CHAIN

© 2007 PAUL GRÜER





CHANDELIERS



LA FLEUR

CH1009 CHANDELIER

INSPIRED BY EXOTIC BLOSSOMS, THIS FIVE-ARM CHANDELIER HIGHLIGHTS GOLD AND SILVER LEAF BLOSSOMS EMANATING FROM PUTTY AND CREAM STRIPED STEMS; AERIAL COPPER BRANCHES ARE TIPPED WITH GOLD LEAF BUDS, PUTTY AND CRÈME STRIPED SHADES

48"W X 50"H X 48"D

5C 60W 6' CHAIN

© 2001 PAUL GRÜER

SEE PAGE 51 FOR MATCHING SCNCE



AUDUBON CH1015 CHANDELIER

FOUR-BRANCH CHANDELIER WITH GOLD LEAF ANEMONES AND WIRY COPPER TWIG-LIKE FLOURISHES SPIKED WITH SILVER GILDED LEAVES GROUNDED IN AN INVERTED PYRAMID BASE. AVAILABLE IN EITHER PUTTY AND CREAM OR BLACK AND GOLD WASHED STRIPES

39"W X 36"H X 39"D
4C 60W 6' CHAIN
© 2001 PAUL GRÜER
SEE PAGE 51 FOR MATCHING SCNCE



“The changing of leaves from late summer to early fall on a small island of trees in Audubon Park provides inspiration for this most organic of chandeliers. A bouquet of autumnal leaves of silver gilding over a rich burnt orange gives a hint of the season to come. The dark bandings of tree trunks become more pronounced as the late evening sun descends beyond the tree tops.”

Paul Grüber







“ *The Mosaic chandelier, inspired by a myriad of tiles that join to create a unique image that is the final piece in the mosaic of style and texture.* ”

Paul Grüer



MOSAIC CH1158-10 CHANDELIER

STRANDS OF MOSAIC JEWELS DETAIL
THIS TEN ARM CHANDELIER

37"W x 39"H x 37"D
10C 60W 6' CHAIN
© 2008 PAUL GRÜER
SEE PAGE 53 FOR MATCHING SCNCE



CHANDELIERS



CROWN CH1154-4 CHANDELIER

SILVER FLEUR DE LIS AND SCULPTED ELEMENTS ADD CHARACTER AND STYLE TO THIS BENJAMIN BURTS' FOUR-ARM CHANDELIER.

28"W x 23"H x 28"D
4C 60W 6' CHAIN
© 2008 BENJAMIN BURTS
SEE PAGE 26 FOR MATCHING LANTERN

REMI CH1109 CHANDELIER

SILVER AND CREAM ACCENTS COMBINED WITH SCULPTED ELEMENTS MAKE THIS FIVE-ARM CHANDELIER UNIQUE. THE SHADES ALSO FEATURE A GRAY AND WHITE CRACKLE EFFECT FINISH, WHICH COMPLEMENT THE ACCENTS.

30"W x 23"H x 30"D
6" x 8" SHADES
5C 60W 6' CHAIN





SWEET OLIVE CH1159-3 CHANDELIER

INSPIRED BY THE FLOWING BRANCHES AND
LEAVES OF AN OLIVE TREE, THESE GILDED
CHANDELIER DESIGNS HAVE LEAF ACCENTS
AND CANDLE-LIKE FIXTURES

20"W x 26"H x 20"D
3C 60W 6' CHAIN
© 2008 PAUL GRÜER
SEE PAGE 53 FOR MATCHING SCONCE



SWEET OLIVE CH1159-6 CHANDELIER

30"W x 35"H x 30"D
6C 60W 6' CHAIN
© 2008 PAUL GRÜER
SEE PAGE 53 FOR MATCHING SCONCE



CHANDELIERS

TASSEL CH1141-8 CHANDELIER

THE PEWTER FINISHED BODY OF THE TASSEL COLLECTION IS ACCENTED WITH CRYSTALS AND SILVER TASSELS. THE ANTIQUED CHAIN IS ADORNED WITH GILDED BOBBINS

34"W x 34"H x 34"D
8C 60W 6' CHAIN
© 2008 PAUL GRÜER





TASSEL CH1141-3 CHANDELIER

20"W x 24"H x 20"D
3C 60W 6' CHAIN
© 2008 PAUL GRÜER



TASSEL CH1141-5 CHANDELIER

28"W x 29"H x 28"D
5C 60W 6' CHAIN
© 2008 PAUL GRÜER





CHANDELIERS

“ *Bon Vivant: A person devoted to refined sensuous enjoyment, one who enjoys the luxuries in life.* ”

The "Bon Vivant" collection could have easily graced many an elegant room, illuminating late evening celebrations of days gone by. Now you can illuminate yours with the gentle sparkle of crystals and subtle time worn finishes. ”

Paul Grüer

BON VIVANT CH1160-8 CHANDELIER

33"W x 37"H x 33"D
8C 60W 6' CHAIN
© 2008 PAUL GRÜER



CHANDELIERS



BON VIVANT CH1160-3 CHANDELIER

19"W x 26"H x 19"D
3C 60W 6' CHAIN
© 2008 PAUL GRÜER



BON VIVANT CH1160-5 CHANDELIER

THE BON VIVANT COLLECTION TIES CLASSIC DESIGN WITH MODERN. IT FEATURES A GILDED BODY WITH CANDLE-LIKE FIXTURES ADORNED WITH CRYSTALS, TASSELS AND SCULPTED BOBÈCHE

28"W x 31"H x 28"D
5C 60W 6' CHAIN
© 2008 PAUL GRÜER





“The Gatetop was inspired by the historic wrought iron fence surrounding the Louisiana Supreme Court Building in the New Orleans French Quarter.”

Paul Grüer



GATETOP
CH1163-4B CHANDELIER

BLACK IRON - SEEDED GLASS
GOLD FLEUR DE LIS ACCENTS

26"W x 37"H x 26"D
4C 60W 6' CHAIN
© 2007 PAUL GRÜER
SEE PAGE 27 FOR MATCHING LANTERN
SEE PAGE 41 FOR MATCHING PENDANT



GATETOP
CH1163-4S CHANDELIER

SILVER IRON - SEEDED GLASS
GOLD FLEUR DE LIS ACCENTS

26"W x 37"H x 26"D
4C 60W 6' CHAIN
© 2007 PAUL GRÜER
SEE PAGE 27 FOR MATCHING LANTERN
SEE PAGE 41 FOR MATCHING PENDANT



CHANDELIERS

MARY FRANCES CH1143-6 CHANDELIER

GOLD LEAVES RUNNING UP AND
DOWN THE GRAY BODY OFFER A
UNIQUE LOOK AND FEEL TO THIS
SIX-ARM CHANDELIER

38"W X 39"H X 38"D
6C 60W 6' CHAIN
© 2008 ELAINE GLEASON
SEE PAGE 26 FOR MATCHING LANTERN





SIMONE CH1162-6 CHANDELIER

A CIRCULAR EARTHEN BASE
SPRINGS GILDED BLOSSOMS ON
THIS SIX-ARM CHANDELIER
WITH CANDLE-LIKE FIXTURES

27"W X 30"H X 27"D
6C 60W 6' CHAIN
© 2008 ELAINE GLEASON





DIEGO CH1153-4 CHANDELIER

TAUPE SHADES ENCIRCLED BY GOLD
TWISTED BARBS CROWN THE
CRYSTAL SPIKES OF THIS UNIQUE
FOUR-ARM CHANDELIER

28"W x 29"H x 28"D
7" x 8" SHADES
4C 60W 6' CHAIN
© 2008 PAUL GRÜER
SEE PAGE 52 FOR MATCHING SCONCE



LANTERNS



CROWN

LAN1154-4 LANTERN

SILVER FLEUR DE LIS AND SCULPTED ELEMENTS ADD CHARACTER AND STYLE TO THIS BENJAMIN BURTS FOUR-LIGHT LANTERN DESIGN

13"W x 31"H x 13"D

4C 60W 6' CHAIN

2008 BENJAMIN BURTS

SEE PAGE 14 FOR MATCHING CHANDELIER

MARY FRANCES

LAN1143-3 LANTERN

DELICATE GILDED LEAF ACCENTS RUN UP AND DOWN THE GRAY BODY OF THIS THREE-LIGHT LANTERN WITH CANDLE-LIKE FIXTURES

19"W x 32"H x 19"D

3C 60W 6' CHAIN

© 2008 ELAINE GLEASON

SEE PAGE 22 FOR MATCHING CHANDELIER





GATETOP

LAN1163-S LANTERN

SILVER IRON WITH SEEDED GLASS
AND GOLD FLEUR DE LIS ACCENTS

10"W x 34"H x 10"D

4C 60W 6' CHAIN

© 2008 PAUL GRÜER

SEE PAGE 21 FOR MATCHING CHANDELIER

SEE PAGE 41 FOR MATCHING PENDANT

GATETOP

LAN1163-B LANTERN

BLACK IRON WITH SEEDED GLASS
AND GOLD FLEUR DE LIS ACCENTS

10"W x 34"H x 10"D

4C 60W 6' CHAIN

© 2008 PAUL GRÜER

SEE PAGE 21 FOR MATCHING CHANDELIER

SEE PAGE 41 FOR MATCHING PENDANT



PENDANTS









SOUTH BEACH PD1019 PENDANT

THE INVERTED SHADE OF THIS CHARMING PENDANT FEATURES BLACK AND CREAM STRIPES AND IS DETAILED WITH A SCULPTED FINIAL. ACRYLIC DIFFUSER

15"W x 9.25"H x 11"D
HAND PAINTED METAL SHADE
1E 100W
12" (2) & 6" (2) STEMS FOR ADJUST-
ABLE HEIGHT
© 2009 PAUL GRÜER
SEE PAGE 91 FOR MATCHING FLOOR LAMP



PENDANTS



FRAGMENT

PD1052G-D GOLD PENDANT

DECORATIVE COLUMN FRAGMENT FINIAL ATOP
A CYLINDRICAL DRUM SHADE
ACRYLIC DIFFUSER

15"W X 9"H X 15"D
HAND LEAFED & GLAZED GOLD METAL SHADE
1E 100W
12" (2) & 6" (2) STEMS FOR ADJUSTABLE HEIGHT
© 2009 PAUL GRÜER



FRAGMENT

PD1052-D SILVER PENDANT

DECORATIVE COLUMN FRAGMENT FINIAL ATOP
A CYLINDRICAL DRUM SHADE.
ACRYLIC DIFFUSER

15"W x 9"H x 15"D
HAND LEAFED & GLAZED SILVER METAL SHADE
1E 100W
12" (2) & 6" (2) STEMS FOR ADJUSTABLE HEIGHT
© 2009 PAUL GRÜER





FRAGMENT

PD1052G-S GOLD PENDANT

DECORATIVE SILHOUETTE OF A
FRAGMENTED HEAD FINIAL ATOP A
CYLINDRICAL SHADE.
ACRYLIC DIFFUSER

8"W x 14.25"H x 8"D
HAND LEAFED & GLAZED
GOLD METAL SHADE
1E 100W
12" (2) & 6" (2) STEMS
FOR ADJUSTABLE HEIGHT
© 2009 PAUL GRÜER



FRAGMENT

PD1052-S SILVER PENDANT

DECORATIVE SILHOUETTE OF A
FRAGMENTED HEAD FINIAL ATOP A
CYLINDRICAL SHADE.
ACRYLIC DIFFUSER

8"W x 14.25"H x 8"D
HAND LEAFED & GLAZED SILVER
METAL SHADE
1E 100W
12" (2) & 6" (2) STEMS FOR
ADJUSTABLE HEIGHT
© 2009 PAUL GRÜER



PENDANTS



ANEMONE II PD1006 MINI PENDANT

THE TAUPE AND CREAM STRIPED
GLAZE CYLINDRICAL SHADE IS SPIKED
WITH A SILVER LEAF SCULPTED
BLOSSOM ELEMENT AND GOLD BALL
FINIAL
ACRYLIC DIFFUSER

6"W x 8"H x 6"D
HAND PAINTED METAL SHADE
1E 100W 12" (2) & 6" (2) STEMS
FOR ADJUSTABLE HEIGHT
© 2009 PAUL GRÜER
SEE PAGE 71 FOR MATCHING TABLE LAMP
SEE PAGE 89 FOR MATCHING FLOOR LAMP



ANEMONE II PD1006 PENDANT

THE TAUPE AND CREAM STRIPED GLAZE
SHADE IS SPIKED WITH A SILVER LEAF
SCULPTED BLOSSOM ELEMENT AND
GOLD BALL FINIAL
ACRYLIC DIFFUSER

5"W x 14.5"H x 8.75"D
HAND PAINTED METAL SHADE
1E 100W 12" (2) & 6" (2) STEMS FOR
ADJUSTABLE HEIGHT
© 2009 PAUL GRÜER
SEE PAGE 71 FOR MATCHING TABLE LAMP
SEE PAGE 89 FOR MATCHING FLOOR LAMP

PENDANTS



COMPASS

PD1055-S PENDANT

GOLD AND SILVER LEAF SPHERES
HIGHLIGHT THE TAUPE CYLINDRICAL
SHADE AND GOLD AND SILVER LEAF
FINIAL. ACRYLIC DIFFUSER

8"W x 12"H x 5.25"D

HAND PAINTED METAL SHADE

1E 100W 12" (2) & 6" (2) STEMS FOR
ADJUSTABLE HEIGHT

*ALSO AVAILABLE WITH 12' CHAIN
INSTEAD OF STEMS

© 2009 PAUL GRÜER

SEE PAGE 47 FOR MATCHING SCNCE



COMPASS

PD1055-L PENDANT

GOLD AND SILVER LEAF SPHERES HIGHLIGHT
THE TAUPE CYLINDRICAL SHADE AND GOLD
AND SILVER LEAF FINIAL. ACRYLIC DIFFUSER

8"W x 19"H x 8"D

HAND PAINTED METAL SHADE

1E 100W 12" (2) & 6" (2) STEMS FOR
ADJUSTABLE HEIGHT

© 2009 PAUL GRÜER

SEE PAGE 47 FOR MATCHING SCNCE





MADISON PD1004 PENDANT

GLAZED AND CRACKLED PUTTY
METAL SHADE. DETAILED WITH A
BLOSSOM FINIAL
ACRYLIC DIFFUSER

15" W x 9.4" H x 11" D
HAND PAINTED METAL SHADE
1E 100W 12" (2) & 6" (2) STEMS FOR
ADJUSTABLE HEIGHT
© 2009 PAUL GRÜER



RETRO PD1031 PENDANT

HAND TEXTURED DRUM SHADE WITH
ORB LIKE FINIAL AND ACRYLIC
DIFFUSER

15" W x 16.5" H x 15" D
HAND PAINTED METAL SHADE
1E 100W 12" (2) & 6" (2) STEMS FOR
ADJUSTABLE HEIGHT
© 2009 PAUL GRÜER



PENDANTS



JEWEL
PD1166-S PENDANT

WHITE CYLINDRICAL
SHADE ACCENTED WITH
CRYSTALS AND A SILVER
BALL FINIAL

7"W x 8"H x 7"D
LINEN SHADE
1E 100W 12' CHAIN
© 2009 PAUL GRÜER



KRISTAL LUXE
PD1040 PENDANT

CRYSTAL NESTS EXTEND
OUTWARD FROM THIS
PENDANT WHICH FEATURES
AN ANTIQUED SHADE WITH A
SILVER STRIPED BORDER

7.5"W x 40.5"H x 7.5"D
HAND PAINTED SHADE
1E 60W
© 2007 PAUL GRÜER
SEE PAGE 57 FOR MATCHING SCNCE



GATETOP PD1163-B PENDANT

BLACK IRON WITH SEEDED
GLASS AND A GOLD FLEUR
DE LIS ACCENT

6.5" W X 22" H X 6.5" D
1E 100W 12' CHAIN
© 2008 PAUL GRÜER
SEE PAGE 21 FOR MATCHING
CHANDELIER
SEE PAGE 27 FOR MATCHING
LANTERN



GATETOP PD1163-S PENDANT

SILVER IRON WITH SEEDED GLASS
AND A GOLD FLEUR DE LIS ACCENT

6.5" W X 22" H X 6.5" D
1E 100W 12' CHAIN
© 2008 PAUL GRÜER
SEE PAGE 21 FOR MATCHING CHANDELIER
SEE PAGE 27 FOR MATCHING LANTERN



SCONCES







SCONCES



WINTER SC1173 WALL SCONCE

HALF ROUND FLAT BACK STYRENE
SHADE

5.75"W x 18"H x 4"D
1E 40W

ADA COMPLIANT
© 2010 PAUL GRÜER



AUTUMN SC1172 WALL SCONCE

HALF ROUND FLAT BACK
STYRENE SHADE

5.75"W x 18"H x 4"D
1E 40W

ADA COMPLIANT
© 2010 PAUL GRÜER



“ The four seasons collection is less a literal interpretation of the seasons and more a mood evoked by my view of spring, summer, fall and winter. The four seasons collection is an attempt to bring a hint of the seasons into homes in a functional and decorative way. ”

Paul Grüber



SPRING

SC1170 WALL SCONCE

HALF ROUND FLAT BACK
STYRENE SHADE

5.75"W x 18"H x 4"D
1E 40W

ADA COMPLIANT
© 2010 PAUL GRÜER



SUMMER

SC1171 WALL SCONCE

HALF ROUND FLAT BACK
STYRENE SHADE

5.75"W x 18"H x 4"D
1E 40W

ADA COMPLIANT
© 2010 PAUL GRÜER



SCONCES



FRAGMENT SC1052-SILVER SCONCE

BURNISHED SILVER LEAF WALL SCONCE FEATURES SCULPTED DECORATIVE ELEMENTS OF SILHOUETTES OF TORSO, HEAD AND COLUMN FRAGMENTS AND A SILVER CYLINDRICAL SHADE

6"W x 38"H x 9"D

1E 60W

© 2003 PAUL GRÜER



FRAGMENT SC1052-GOLD SCONCE

BURNISHED GOLD LEAF WALL SCONCE FEATURES SCULPTED DECORATIVE ELEMENTS OF SILHOUETTES OF TORSO, HEAD AND COLUMN FRAGMENTS AND A GOLD CYLINDRICAL SHADE

6"W x 38"H x 9"D

1E 60W

© 2003 PAUL GRÜER

“ One of my favorite things to do is search the French Market in the Quarter to find unique treasures, fragments from the past. Some of these treasures have found a home in the ‘Fragment’ Collection. A touch of the old worked into new designs that bring a bit of history and New Orleans charm to any interior design. ”

Paul Grüber



COMPASS

SC1055 SCONCE

GOLD AND SILVER LEAF SPHERES
HIGHLIGHT THE INVERTED
CYLINDRICAL SHADE ABOVE A
TWO-TIERED ECLIPSE OF CRYSTALS

10"W x 37"H x 9.5"D

1E 60W

© 2003 PAUL GRÜER

SEE PAGE 37 FOR MATCHING PENDANTS



KRISTAL

SC1045 SCONCE

INVERTED PUTTY COLOR ACID WASHED
SHADE, STAR-SHAPED WALL PLATE, AND
DELICATE GOLD LEAF BRANCHES
ADORNED WITH CUT GLASS JEWELS

10"W x 22"H x 7"D

1E 60W

© 2003 PAUL GRÜER



SCONCES



SIMONE
SC1148-1 SCONCE

THE GRAY BODY OF THIS WALL SCONCE IS ACCENTED BY A GOLD SCULPTED BLOSSOM ELEMENT AND CANDLE-LIKE FIXTURE

7"W x 11"H x 6"D
1C 60W
© 2008 ELAINE GLEASON



SIMONE
SC1148-2 SCONCE

THE GRAY BODY OF THIS TWO-ARM WALL SCONCE IS ACCENTED BY A GOLD SCULPTED BLOSSOM ELEMENT, GILDED LEAVES, AND CANDLE-LIKE FIXTURES

17"W x 36"H x 9"D
2C 60W
© 2008 ELAINE GLEASON



DUMAINE SC1046 SCONCE

THE GOLD LEAF DECORATIVE ELEMENT ON THIS WALL SCONCE COMPLETES METAL STEM AND SHIELD-SHAPED WALL PLATE WITH TAUPE UMBER WASH. ALSO FEATURES A CYLINDRICAL CREAM COLORED FABRIC SHADE AND GOLD LEAF FLAME FINIAL

6"W x 29"H x 8"D
1E 60W
© 2002 PAUL GRÜER



NOEL SC1106 SCONCE

FEATURES CIRCULAR GEOMETRIC SHAPES THAT ACCENT THE STEM AND A CYLINDRICAL SILK SHADE

6"W x 21.5"H x 7.25"D
1E 60W
© 2007 PAUL GRÜER
SEE PAGE 76 FOR MATCHING TABLE LAMP





LA FLEUR SC1009-1 SCONCE

THE GOLD AND SILVER BLOSSOM BOBECHE ON THIS WALL SCONCE IS TOPPED WITH TAUPE AND CREAM STRIPED SHADE AND FEATURES A STAR-SHAPED WALL PLATE

8"W x 25"H x 11"D
1E 60W

© 2008 PAUL GRÜER
SEE PAGE 10 FOR MATCHING CHANDELIER



AUDUBON II SC1015-1 SCONCE

BLACK AND TAN STRIPED SHADE TOPS GOLD ANEMONE SCULPTED ELEMENT AND SILVER BALL ON THIS WALL SCONCE WITH A METAL STAR-SHAPED WALL PLATE

10"W x 21"H x 9"D
1E 60W

© 2008 PAUL GRÜER
SEE PAGE 11 FOR MATCHING CHANDELIER



SCONCES



DIEGO SC1153-1 SCONCE

TAUPE SHADE AND GOLD
TWISTED BARBS HIGHLIGHT THIS
WALL SCONCE WITH A CRYSTAL
ACCENT

9"W X 24"H X 13"D
1E 100W
© 2008 PAUL GRÜER
SEE PAGE 25 FOR MATCHING CHANDELIER

DAKOTA SC1012 SCONCE

STAGGERED GOLD LEAF SQUARES
ON A FIELD OF VAN DYKE BROWN
FORM THE VISUAL THEME FOR THE
SHADE AND WALL PLATE. ELON-
GATED STEM ACCENTED AT EACH
END WITH TEXTURED SILVER
BALLS, GILDED LEAF FINIAL AND
STEM FLOURISH

6"W X 30"H X 8"D
1E 60W
© 2008 PAUL GRÜER





SWEET OLIVE SC1159-2 SCONCE

THE GOLD LEAF DECORATIVE ELEMENT ON THIS WALL SCONCE CONNECTS THE METAL STEM AND SHIELD-SHAPED WALL PLATE IN TAUPE UMBER WASHED FINISH.

17"W x 22"H x 7"D

2C 60W

© 2008 PAUL GRÜER

SEE PAGE 15 FOR MATCHING CHANDELIER

MOSAIC SC1158-3 SCONCE

UNIQUE STRINGS OF MOSAIC PIECES TRAVERSE GRACEFULLY FROM ARM TO ARM OF THIS THREE-ARM WALL SCONCE WITH SCULPTED BOBECHE AND CANDLE-LIKE FIXTURES

9"W x 24"H x 13"D

3C 60W

© 2008 PAUL GRÜER

SEE PAGE 13 FOR MATCHING CHANDELIER





SCONCES

PALM LUXE SC1140-1 SCONCE

THE GRACEFUL CURVED ARM SUPPORTS A CANDLE-LIKE FIXTURE DETAILED WITH SILVER AND WHITE STRIPES. ACCENTED WITH A SCULPTED BOBECHE, AND A CIRCULAR SCULPTED WALL PLATE

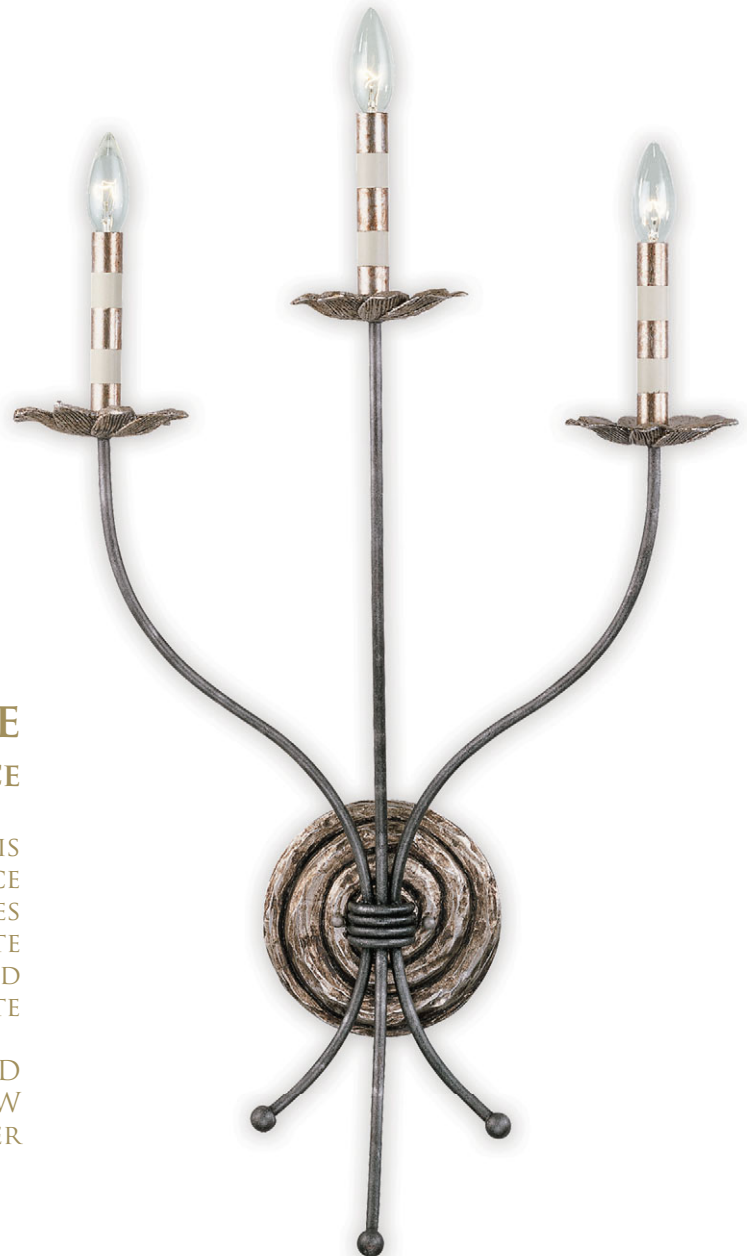
7"W x 32"H x 10"D
1C 60W
© 2008 PAUL GRÜER



PALM LUXE SC1140-3 SCONCE

THE GRAY BLACK ARMS OF THIS ELEGANT THREE-ARM WALL SCONCE SUPPORTS CANDLE-LIKE FIXTURES DETAILED WITH SILVER AND WHITE STRIPES, SCULPTED BOBECHEs, AND A CIRCULAR SCULPTED WALL PLATE

20"W x 32"H x 10"D
3C 60W
© 2008 PAUL GRÜER





SPYRO

SC1138-1 SCONCE

FEATURES A CIRCULAR SCULPTED SILVER WALL PLATE, SCULPTED DECORATIVE ELEMENTS, AND A CANDLE-LIKE FIXTURE WITH GOLD AND WHITE STRIPES

5"W x 21"H x 7"D

1C 60W

© 2008 PAUL GRÜER



SPYRO

SC1138-3 SCONCE

FEATURES A CIRCULAR SCULPTED SILVER WALL PLATE, SCULPTED DECORATIVE ELEMENTS, AND CANDLE-LIKE FIXTURES WITH GOLD AND WHITE STRIPES

15"W x 22"H x 7"D

3C 60W

© 2008 PAUL GRÜER





KRISTAL LUXE SC1040 SCONCE

LIGHT CATCHING NESTS OF CUT GLASS EXTEND OUTWARD FROM THIS UNIQUE WALL SCONCE FEATURING AN ANTIQUED, INVERTED SHADE WITH A SILVER STRIPED BORDER

7"W x 25"H x 8"D

1E 60W

© 2007 PAUL GRÜER

SEE PAGE 40 FOR MATCHING PENDANT

LAMPS







DECORATIVE LAMPS



BIENVILLE

TA1126M TABLE LAMP

ANTIQUED MUSTARD AND GOLD
ADORN THE BASE, TOPPED WITH A
LIGHT TAN OVERSIZED SHADE

18"W x 30"H x 18"D

1E 100W

© 2007 BENJAMIN BURTS



BIENVILLE

TA1126 TABLE LAMP

FEATURING A GOLD AND SILVER
BODY TOPPED BY AN OVERSIZED
CYLINDRICAL GILDED SHADE

18"W x 30"H x 18"D

1E 100W

© 2007 BENJAMIN BURTS



MADISON TA1004 TABLE LAMP

PYRAMID-SHAPED TABLE LAMP
BASE WITH CRACKLED PUTTY
FINISH SPEARING A DECORATIVE
SCULPTED ELEMENT SPIKED WITH
CRYSTAL-LIKE CUT GLASS
FEATURING A GLAZED AND
CRACKLED PUTTY FINISHED
SHADE

8"W x 42"H x 8"D
1E 100W
© 2001 PAUL GRÜER



KRISTAL TA1045 TABLE LAMP

FEATURING AN INVERTED
PUTTY COLOR ACID WASHED
SHADE, AND DELICATE GOLD
LEAF BRANCHES THAT SPIKE
CUT GLASS JEWELS ON GOLD
LEAF METAL STEM

16"W x 36"H x 16"D
1E 60W
© 2002 PAUL GRÜER





FRAGMENT

TA1013-S TABLE LAMP

SILVER LAMP FEATURES
MOLDED SILHOUETTES OF A
TORSO, CROSS AND FACE
CAST FROM ORIGINAL
PIECES OF ANCIENT
STONEWORK FRAGMENTS

9 "W x 40 "H x 9 "D
1E 60W
© 2001 PAUL GRÜER



FRAGMENT

TA1013-G TABLE LAMP

GOLD-LEAF LAMP FEATURES MOLDED
SILHOUETTES OF A TORSO, CROSS AND
FACE CAST FROM ORIGINAL PIECES OF
ANCIENT STONEWORK FRAGMENTS

9 "W x 40 "H x 9 "D
1E 60W
© 2001 PAUL GRÜER

“ One of my favorite things to do is search the French Market in the Quarter to find unique treasures, fragments from the past. Some of these treasures have found a home in the ‘Fragment’ Collection. A touch of the old worked into new designs that bring a bit of history and New Orleans charm to any interior design. ”

Paul Grüer



DECORATIVE LAMPS



POME

TA1032 TABLE LAMP

A SCULPTED SHAPED ELEMENT INSPIRED BY THE FRENCH PASSION FRUIT AND A GLAZED GOLD AND SILVER LEAF DISC WITH GLAZED CYLINDRICAL SHADE STUDDED IN SILVER LEAF MOLDED JEWEL-LIKE ELEMENTS

6"W x 25.5"H x 6"D
1E 60W
© 2002 PAUL GRÜER

DOMINIQUE

TA1074 TABLE LAMP

STAR-SHAPED BASE WITH GOLD LEAF, BLACK AND CREAM STRIPED METAL STEM WITH A GOLD LEAFED BLOSSOM. COMPLIMENTARY STRIPED SHADE AND GOLD LEAFED FINIAL

8"W x 25"H x 8"D
1E 60W
© 2004 PAUL GRÜER





NETTLE

TA1024 TABLE LAMP

CONSOLE LAMP FEATURING A GOLD LEAF SCULPTED BASE AND METAL STEM WITH SCULPTED BLOSSOM ELEMENT; CYLINDRICAL CREAM SHADE IN PUTTY WASH TOPPED WITH GILDED BLOSSOM FINIAL.

6.5 "W x 40 "H x 6.5 "D.
1E 100W
© 2001 PAUL GRÜER



BIRDLAND

TA1057 TABLE LAMP

CRACKLED PUTTY FINISH, GOLD LEAF, AND CREAM STRIPES DETAIL THE SHADE ABOVE A MELANGE OF NARROWING STRIPED STEMS IN A WASHED FINISH. ADORNED WITH CRYSTAL ACCENTS ON A TWO-TIER STAR-SHAPED BASE.

9 "W x 45 "H x 9 "D.
1E 100W
© 2001 PAUL GRÜER





NETTLE LUXE TA1030-S TABLE LAMP

SILVER AND CREAM STRIPED
SHADES AND SPIKED NETTLE
FINIAL TOP THIS DISTINCTIVE
TWO-ARM TABLE LAMP

20 "W x 40 "H x 11 "D
SHADE DIMENSIONS: 7" x 15"
2E 60W

© 2002 PAUL GRÜER
SEE PAGE 90, 91 FOR MATCHING
FLOOR LAMPS



NETTLE LUXE TA1030 TABLE LAMP

GOLD LEAF AND TAUPE STRIPED
SHADES AND SPIKED NETTLE
TOP THIS DISTINCTIVE TWO-ARM
TABLE LAMP

20 "W x 40 "H x 11 "D
SHADE DIMENSIONS: 7" x 15"
2E 60W

© 2002 PAUL GRÜER
SEE PAGE 90, 91 FOR MATCHING
FLOOR LAMPS



DECORATIVE LAMPS



TIVOLI TA1038 TABLE LAMP

TEARDROP-SHAPES OF CUT GLASS REFLECT FROM GOLD LEAF AND CREAM STRIPED STEM; INVERTED GOLD LEAF AND CREAM STRIPED SHADE. TOPPED WITH GILDED BALL FINIAL

9"W x 38"H x 9"D
1E 60W
© 2002 PAUL GRÜER



TIVOLI TA1038-S TABLE LAMP

TEARDROP-SHAPES OF CUT GLASS REFLECT FROM SILVER LEAD AND WHITE STRIPED STEM; INVERTED SILVER LEAF AND WHITE STRIPED SHADE. TOPPED WITH SILVER BALL FINIAL

9"W x 38"H x 9"D
1E 60W
© 2002 PAUL GRÜER



NOMA LUXE TA1008 TABLE LAMP

GOLD AND BLACK STRIPED
SQUARE BASE RAISED ON
SMALL ROUND SILVER LEAF
FEET. METAL STEM IS
EMBELLISHED WITH SCULPTED
PALM-INSPIRED ELEMENT, AND
BALL FINIAL. GLAZED GOLD
LEAF SHADE

7"W x 40"H x 7"D
1E 100W
© 2001 PAUL GRÜER



POMPADOUR LUXE TA1002 TABLE LAMP

MOLDED DUCK FEET SUPPORT
THE GOLD LEAF BASE WITH ACID
ETCHING WITH A STRIPED SHADE
AND A POMPADOUR-INSPIRED
ELEMENT ATOP THE STEM

9"W x 40"H x 9"D
1E 100W
© 2001 PAUL GRÜER



DECORATIVE LAMPS



CARYATID TA1017 TABLE LAMP

STACKED BASE ON SWIRL FEET,
WITH A SCUPLTED GOLD LEAF
METAL STEM INFLUENCED BY 18TH
CENTURY CARYATID ELEMENT.
UMBER GLAZE ADDS RICHNESS TO
THE GOLD LEAF SHADE

9"W x 28"H x 9"D
1E 60W
© 2001 PAUL GRÜER



CARYATID TA1017-S TABLE LAMP

STACKED BASE ON SWIRL
FEET, WITH A SCUPLTED
SILVER LEAF METAL STEM
INFLUENCED BY 18TH
CENTURY CARYATID ELEMENT.
UMBER GLAZE ADDS
RICHNESS TO THE SILVER
SHADE

9"W x 28"H x 9"D
1E 60W
© 2001 PAUL GRÜER



ANEMONE TA1006 TABLE LAMP

STAR-SHAPED BASE WITH GOLD LEAF, TAUPE AND CREAM STRIPED METAL STEM SPIKED WITH A GOLD LEAFED SCULPTED BLOSSOM ACCENT THIS TABLE LAMP. SHADE IS INVERTED REPEATING THE TAUPE AND CREAM STRIPED GLAZE MEDIUM, GOLD LEAF BALL-SHAPED FINIAL

10"W x 29"H x 10"D
1E 150W

© 2001 PAUL GRÜER

SEE PAGE 36 FOR MATCHING PENDANTS



LA FLEUR TA1009 TABLE LAMP

A GOLD LEAF SCULPTED BLOSSOM BURSTS FROM BLACK AND TAUPE STRIPED STEM FROM A STAR-SHAPED BASE ON THIS CONSOLE LAMP WITH A BLACK AND TAUPE STRIPED SHADE. FINISHED WITH GOLD LEAF BALL-SHAPED FINIAL

9"W x 40"H x 9"D
1E 100W

© 2001 PAUL GRÜER

SEE PAGE 91 FOR MATCHING FLOOR LAMP



DECORATIVE LAMPS



PEONY

TA1026 TABLE LAMP

SILVER LEAF BALL FEET SUPPORT A SQUARE TAPERED PEDESTAL BASE WITH TAUPE AND BLACK STRIPES. SCULPTED PEONY BLOSSOM ACCENT AND SILVER STEM BELOW THE INVERTED BLACK AND TAUPE STRIPED SHADE. TOPPED WITH A GOLD PEONY FINIAL.

9"W x 44"H x 9"D

1E 60W

© 2002 PAUL GRÜER

LE CIRQUE

TA1078 TABLE LAMP

SCULPTED GOLD LEGS SUPPORT A RED AND TAN SPHERE. SCULPTED HIGHLIGHTS FLANK A BLACK AND CRÈME METAL STEM. INVERTED BEIGE AND CRÈME SHADE IS TOPPED BY A RED SCULPTED FINIAL

9"W x 40"H x 9"D

1E 100W

© 2004 PAUL GRÜER





GRENOUILLE TA1075 TABLE LAMP

FOUR GILDED FROGS ATOP A BLACK BASE SUPPORTING THE CORNERS OF AN UMBER WASHED CENTER BLOCK. LIGHT BROWN SILK SQUARE SHADE CROWNED WITH GOLD LEAF LIKE FINIAL

10"W x 31"H x 10"D
1E 60W
© 2005 PAUL GRÜER



PHOENICIAN TA1023 TABLE LAMP

THE SILVER LEAF BALL FEET OF THIS TABLE LAMP SUPPORT SILVER LEAF DISC AND GOLD AND BLACK STRIPED MOLDED UNDULATING BASE OF A SILVER LEAF METAL STEM. GOLD LEAF BANDS ACCENT BLACK SHADE, WITH PHOENICIAN-INSPIRED MOLDED FINIAL

8"W x 30.5"H x 8"D
1E 60W
© 2001 PAUL GRÜER



DECORATIVE LAMPS



FLAMBEAU TA1027 TABLE LAMP

FLAMBEAU COLLECTION
NAMESAKE CONSOLE LAMP,
TWISTED BRASS BASE SUPPORTS
THE BLACK AND CREAM STRIPED
MOLDED STEM TOPPED WITH
SCULPTED DECORATIVE
BLOSSOM. INVERTED DRUM
SHADE IS TOPPED BY SILVER LEAF
BALL FINIAL

10"W x 36"H x 10"D
1E 60W
© 2002 PAUL GRÜER

MAIDEN VOYAGE TA1016 TABLE LAMP

FLAMBEAU'S SIGNATURE DUCK-
FOOTED BASE ELEVATED BY FOUR
GOLD LEAF MAIDEN TORSOS
WHICH, IN TURN, SUPPORT A
PYRAMID SHAPED FORM TOPPED
WITH A GOLD LEAF FLOURISHING
BLOSSOM. STAGGERED LEAF
SQUARES ADD A DISTRESSED
ELEMENT TO SHADE AND BASE.
ABSTRACT FINIAL INSPIRED BY A
WROUGHT IRON FENCE DETAIL

8"W x 38"H x 8"D
1E 100W
© 2001 PAUL GRÜER





DANTE

TA1101 TABLE LAMP

RED TWO-TIER STEM, STAR-SHAPED BASE AND BLACK SHADE

9"W x 37.5"H x 9"D
1E 100W

© 2007 PAUL GRÜER



RETRO

TA1031 TABLE LAMP

RETRO-INSPIRED TABLE LAMP WITH GOLD BASE AND TEXTURED, THREE-DIMENSIONAL OVALS IN ASCENDING SIZES. TEXTURED SHADE WITH GOLD LEAF STRIPED BORDER AND ORB-LIKE FINIAL

15"W x 35"H x 15"D
1E 100W

© 2002 PAUL GRÜER





DECORATIVE LAMPS



NOEL

TA1106 TABLE LAMP

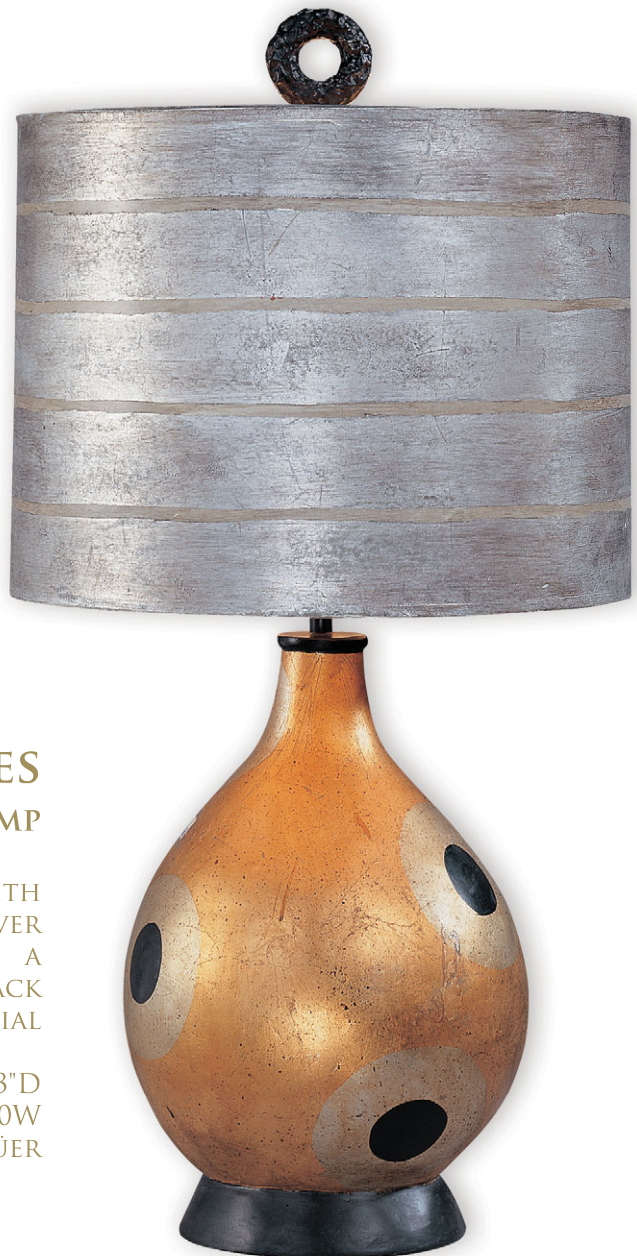
GEOMETRIC CIRCLES DESCENDING IN SIZE ON THE DARK GOLD STEM, FINISHED WITH A CYLINDRICAL SILK SHADE AND TOPPED WITH RING FINIAL

14"W x 32.5"H x 14"D

2E 60W

© 2007 PAUL GRÜER

SEE PAGE 49 FOR MATCHING SCNCE



PERICLES

TA1100 TABLE LAMP

ROUND GOLD BODY IS ACCENTED WITH CIRCULAR BLACK AND SILVER HIGHLIGHTS. TOPPED WITH A CYLINDRICAL SILVER SHADE AND BLACK SCULPTED FINIAL

13"W x 26"H x 13"D

1E 100W

© 2007 PAUL GRÜER



SPHERE

TA1098 TABLE LAMP

GILDED LARGE SPHERE GLOBE ON
FLAT SQUARE BASE TOPPED WITH
A CREAM SHADE DETAILED WITH
BLACK SOUTACHE.
12"W X 28"H X 12"D
1E 100W
© 2007 PAUL GRÜER



AMPHOR LUXE

TA1018 TABLE LAMP

ACID WASHED GOLD LEAF MOLDED
URN WITH DECORATIVE CRYSTAL
HANDLES. SQUARE PEDESTAL BASE
SUPPORTS A GOLD LEAF SPHERE.
TOPPED WITH AN INVERTED SILVER
LEAF ACID WASHED SHADE

15"W X 36"H X 15"D
1E 100W
© 2002 PAUL GRÜER



DECORATIVE LAMPS



ROUGE

TA1037 TABLE LAMP

GOLD LEAF AND RED STRIPED COLUMN RESTS ABOVE A SQUARE PEDESTAL BASE SUSPENDED BY GOLD LEAF SPEAR FEET, INVERTED GOLD LEAF AND RED STRIPED SHADE WITH RED FLAME-SHAPED FINIAL

10"W x 32"H x 10"D
1E 60W
© 2002 PAUL GRÜER



LA FLEURETTE

TA1077 TABLE LAMP

STAR SHAPED BASE WITH GOLD LEAF, CREAM AND TAN METAL STEM TOPPED WITH A SCULPTED ROSETTE AND SPHERE COMBINED. FINISHED WITH AN ANTIQUED TAN SHADE DECORATED WITH FLORAL APPLIQUÉS AND MATCHING FINIAL

9"W x 21.5"H x 9"D
1E 60W
© 2004 PAUL GRÜER



LIBERTÉ TA1058 TABLE LAMP

EIFFEL TOWER SHAPED BASE STUDDED
MID-WAY WITH GOLD LEAF ELEMENTS
AND CROWNED WITH A TORCH-LIKE
COPPER LEAF FLAME

11"W x 28"H x 11"D
1E 60W
© 2003 PAUL GRÜER



PORTAL TA1059 TABLE LAMP

SINEWY GOLD LEAF METAL WRAPS ADD
DIMENSION TO WOVEN FEET THAT
SUPPORT AN OPEN EBONY CUBE
DETAILED WITH GOLD LEAF AND
ACCENTED WITH A SINGLE SILVER
LEAF SPHERE.

11"W x 24"H x 11"D
1E 100W
© 2003 PAUL GRÜER



DECORATIVE LAMPS



JACKSON

TA1118-S TABLE LAMP

AN ANTIQUED SILVER JAR FLANKED WITH GOLD LEAF MOUNTING, CAP, AND HANDLES. TOPPED WITH AN OFF-WHITE SHADE,

16"W x 29.5"H x 16"D

1E 100W

© 2008 PAUL GRÜER



JACKSON

TA1118 TABLE LAMP

ANTIQUED GOLD JAR TABLE LAMP FEATURES A TORTOISE-LIKE FINISH AND IS TOPPED WITH A BROWN SHADE DETAILED WITH A GILDED EDGE

16"W x 29.5"H x 16"D

1E 100W

© 2007 BENJAMIN BURTS



URSULINE
TA1119-S TABLE LAMP

BLACK AND SILVER BODY WITH
SILVER FINIAL AND HANDLES,
COMPLIMENTED BY AN OVERSIZED
CYLINDRICAL BLACK SHADE

19"W x 28.5"H x 19"D
1E 100W
© 2007 BENJAMIN BURTS



URSULINE
TA1119 TABLE LAMP

BROWN AND GOLD BODY WITH
GILDED FINIAL HANDLES,
COMPLIMENTED BY AN OVERSIZED
CYLINDRICAL RICH BROWN SHADE

19"W x 28.5"H x 19"D
1E 100W
© 2007 BENJAMIN BURTS



DECORATIVE LAMPS

COMUS

TA1122 TABLE LAMP

FOUR SHROUDED GODDESSES ADORN THE TOP OF THIS TABLE LAMP. MAIN BODY FINISHED IN AN ANTIQUED MUSTARD YELLOW WITH BRUSHED SILVER HIGHLIGHTS. LIGHT TAN SHADE WITH THIN GOLD BORDER

20"W x 46.5"H x 20"D
1E 100W
© 2007 BENJAMIN BURTS



DERBIGNY

TA1117 TABLE LAMP

OVERSIZED GOLD AND BLACK TABLE LAMP WITH BLACK SHADE. TWO SCULPTED SHROUDED GODDESSES ADORN THE NECK AND CREATE A SILHOUETTE WHEN THE LAMP IS LIT

20"W x 43"H x 20"D
1E 100W
© 2007 BENJAMIN BURTS

DECORATIVE LAMPS



VICTOR

TA1139 TABLE LAMP

GOLD SCULPTED FACE AND HANDLES REST ABOVE A RUBY RED BASE WITH GOLD HIGHLIGHTS, BLACK SHADE IS DETAILED WITH GOLD TRIM.

16"W x 34.5"H x 16"D

1E 100W

© 2007 BENJAMIN BURTS



BASIN

TA1129 TABLE LAMP

DOUBLE HANDLED BODY HAS A DISTRESSED SILVER FINISH WITH DARK WARM BROWN UNDERTONES. A BLACK SHADE WITH SPATTER HIGHLIGHTS TOPS THIS DESIGN

16"W x 34.5"H x 16"D

1E 100W

© 2007 BENJAMIN BURTS



DECORATIVE LAMPS



GENTILLY

TA1113 TABLE LAMP

ANTIQUED SILVER AND BLACK BODY
DETAILED WITH TWISTED ROPE
HANDLES AND FINIAL. TOPPED
WITH A BLACK SHADE

17"W x 28.75"H x 9.5"D
1E 100W
© 2007 BENJAMIN BURTS



VILLERE

TA1121 TABLE LAMP

ANTIQUED GOLD URN BODY WITH
HANDLES IS TOPPED WITH A TAN
SHADE ACCENTED WITH BRUSHED
GOLD ACCENTS.

DIMENSIONS:
16 "W x 44.5 "H x 16 "D
1E 100W.
© 2007 BENJAMIN BURTS



GENTILLY

TA1113-G TABLE LAMP

ANTIQUED GOLD AND BROWN BASE
DETAILED WITH TWISTED ROPE
HANDLES AND FINIAL. TOPPED
WITH A BROWN SHADE

17"W x 28.75"H x 9.5"D
1E 100W
© 2007 BENJAMIN BURTS



DEGAS
TA1120 TABLE LAMP

THE SILVER LEAF AND BROWN BODY ARE HIGHLIGHTED BY GILDED ACCENTS ON THIS CLASSIC VASE TABLE LAMP DESIGN. A BLACK SHADE HAS A LIGHT SPATTERING EFFECT WITH AN ANTIQUED GOLD INTERIOR LINING.

DIMENSIONS:
16 "W x 33 "H x 16 "D
1E 100W
© 2007 BENJAMIN BURTS



TAMMANY
TA1123 TABLE LAMP

SILVER WITH COCOA BROWN ACCENTS ALONG WITH THE SHROUDED GODDESS FACE ARE STRONG ELEMENTS IN THIS TABLE LAMP. COCOA SHADE

16"W x 38.25"H x 12"D
1E 100W
© 2007 BENJAMIN BURTS



IBERVILLE
TA1127 TABLE LAMP

SILVER BODY OF THIS TABLE LAMP IS HIGHLIGHTED BY GOLD AND BLACK ACCENTS. CYLINDRICAL BLACK SHADE AND GOLD BALL FINIAL TOP

14"W x 31.5"H x 14"D
1E 100W
© 2007 BENJAMIN BURTS



DECORATIVE LAMPS



MARIE TA1104 TABLE LAMP

THREE DESCENDING RED
SPHERES DROP DOWN TO A
GOLD CIRCULAR BASE
TOPPED WITH A BLACK
PAINTED SHADE

8"W x 34"H x 8"D
1E 60W
© 2007 PAUL GRÜER



MARIE TA1104-S TABLE LAMP

THREE DESCENDING SILVER
SPHERES DROP DOWN TO A
GOLD CIRCULAR BASE
TOPPED
WITH A FABRIC SHADE

8"W x 34"H x 8"D
1E 60W
© 2007 PAUL GRÜER



RODRIGUE TA1134 TABLE LAMP

SMALL, BELL SHAPED
TABLE LAMP IS TOPPED BY
A GOLD FLEUR DE LIS AND
A BLACK SHADE WITH
GOLD SPATTER ACCENTS

12"W x 24"H x 12"D
1E 60W
© 2008 BENJAMIN BURTS



ARCHER TA1136 TABLE LAMP

BENT ARROWS JOIN AT THE
CENTER TO FORM THE
DISTRESSED GOLD AND SILVER
BODY OF THIS TABLE LAMP.
ARROW HEADS, QUILLS AND THE
CENTER SCULPTURE ARE ALL
DISTRESSED SILVER. THE SHADE
IS A BLACK FABRIC WEAVE

18"W x 32.5"H x 18"D
1E 100W
© 2008 PAUL GRÜER

FLEUR DE LIS TA1130 TABLE LAMP

PETITE TABLE LAMP WITH
GOLD AND SILVER BODY.
SCULPTED FLEUR DE LIS
SITS ATOP A SILVER BALL
AND GOLD BASE. BLACK
SHADE WITH GOLD
SPATTER ACCENTS

12"W x 22"H x 12"D
1E 60W
© 2008 BENJAMIN BURTS





DECORATIVE LAMPS



TECHE

TA1131 TABLE LAMP

DISTRESSED GOLD TABLE LAMP TOPPED BY A SCULPTED FLEUR DE LIS. BLACK SHADE ACCENTED WITH GOLD SPATTER AND GOLD STRIPED BORDER

16"W X 36"H X 16"D

1E 100W

© 2008 BENJAMIN BURTS



BON TEMPS

TA1132 TABLE LAMP

TILTED SCULPTED FACE ATOP A TOWERING COLUMN. BLACK, GOLD AND SILVER LAMP HIGHLIGHTED BY A BRUSHED GOLD STRIPE ALONG THE TOP OF THE SHADE

17"W X 33"H X 17"D

1E 100W

© 2008 BENJAMIN BURTS



ANEMONE

FL1006 FLOOR LAMP

STAR SHAPED BASE WITH GOLD LEAF, PUTTY AND CREAM STRIPED METAL STEM SPIKED WITH A GOLD LEAF BLOSSOM. INVERTED CONE SHADE WITH PUTTY AND CREME STRIPED GLAZE MEDIUM AND GOLD LEAF BALL-SHAPED FINIAL

15"W x 73"H x 15"D

1E 100W

© 2001 PAUL GRÜER



FRAGMENT

FL1013-S FLOOR LAMP

SILVER LEAF WITH UMBER GLAZE SETS OFF A DRUM SHADE, STEPPED BASE AND STEM STUDDED SILHOUETTES OF A TORSO, CROSS AND FACE CAST FROM ORIGINAL PIECES OF ANCIENT STONEWORK FRAGMENTS

15"W x 67"H x 15"D

1E 100W

© 2001 PAUL GRÜER



FRAGMENT

FL1013-G FLOOR LAMP

GOLD LEAF WITH UMBER GLAZE SETS OFF A DRUM SHADE, STEPPED BASE AND STEM STUDDED SILHOUETTES OF A TORSO, CROSS AND FACE CAST FROM ORIGINAL PIECES OF ANCIENT STONEWORK FRAGMENTS

15"W x 67"H x 15"D

1E 100W

© 2001 PAUL GRÜER





DECORATIVE LAMPS

SOUTH BEACH

FL1019 FLOOR LAMP

GOLD LEAF AND A BLACK STRIPED STEM SUPPORTED BY STAR SHAPED BASE ETCHED TO RESEMBLE COBBLESTONE STREETS, WITH GOLD LEAF BLOSSOM AND FINIAL. PAINTED BLACK AND PUTTY STRIPES OUTLINE THE SHADE
 14"W X 68"H X 14"D
 1E 100W
 © 2002 PAUL GRÜER



NETTLE LUXE FL1048-S FLOOR LAMP

JAGGED STAR SHAPED BASE ETCHED IN GOLD LEAF TO RESEMBLE COBBLESTONE STREETS. GOLD LEAF DECORATIVE STEM FINIALS, BEIGE AND SILVER LEAF STRIPED SHADES
 25"W X 78"H X 14"D
 2E 60W
 © 2002 PAUL GRÜER



NETTLE LUXE FL1048-G FLOOR LAMP

JAGGED STAR SHAPED BASE ETCHED IN GOLD LEAF TO RESEMBLE COBBLESTONE STREETS. GOLD LEAF DECORATIVE STEM FINIALS, GOLD AND TAUPE STRIPED SHADES
 25"W X 78"H X 14"D
 2E 60W
 © 2002 PAUL GRÜER



LA FLEUR

FL1009 FLOOR LAMP

GOLD LEAF SQUARES SIMULATE A NEW ORLEANS SIDEWALK TO FORM THE DECORATIVE PLATE BASE. GOLD LEAF BLOSSOM BURSTS FROM BLACK AND PUTTY STRIPED STEM. BLACK AND PUTTY STRIPED SHADE, TOPPED WITH GOLD LEAF BALL FINIAL

9"W x 73"H x 9"D
1E 100W
© 2001 PAUL GRÜER



NETTLE

FL1024-G FLOOR LAMP

JAGGED STAR SHAPED BASE ETCHED IN GOLD LEAF TO RESEMBLE COBBLESTONE STREETS INDIGENOUS TO NEW ORLEANS. TOPPED WITH GOLD LEAF SCULPTED FINIALS ABOVE STRIPED METAL SHADES

18.25"W x 77"H x 18.25"D
1E 100W
© 2008 PAUL GRÜER



NETTLE

FL1024-S FLOOR LAMP

SILVER





ACCESSORIES

ARMORY

CT1050 COFFEE TABLE

GOLD LEAF AND GLAZED ROUND TABLE TOP WITH SILVER AND GOLD LEAF SCULPTED DECORATIVE FACE FRAGMENTS ON LEGS, GILDED SWIRL FEET

27"W x 20.25"H x 27"D

© 2003 PAUL GRÜER



ARMORY

ST1050 ACCENT TABLE

GOLD LEAF AND GLAZED ROUND TABLE TOP WITH SILVER AND GOLD LEAF SCULPTED DECORATIVE FACE FRAGMENTS ON LEGS, GILDED SWIRL FEET

17"W x 29"H x 17"D

ALSO AVAILABLE

17"W x 26"H x 17"D

© 2002 PAUL GRÜER





ARMORY

CON1050 DEMI-LUNE TABLE

GOLD LEAF AND GLAZED DEMI-LUNE TABLE TOP WITH SILVER AND GOLD LEAF SCULPTED DECORATIVE FACE FRAGMENTS ON LEGS, GILDED SWIRL FEET

35"W x 34"H x 15"D
© 2003 PAUL GRÜER



ARMORY

SI1050 BARSTOOL

GILDED SWIRL FEET SUPPORT SILVER AND GOLD LEAF DECORATIVE FACE FRAGMENTS ON LEGS, TOPPED WITH A BLACK LEATHER SEAT

15"W x 31"H x 15"D
© 2003 PAUL GRÜER





ACCESSORIES

VENETIAN CS1060 S, M & L

A DISTRESSED GOLD LEAFED BASE FORMS THE FOUNDATION OF THE SLITHERING STEM PUNCTUATED WITH DISTRESSED BALL-SHAPED ELEMENTS AND FESTOONED WITH A FEAST OF CUT-GLASS CRYSTALS

CS1060S: 6"W x 18.5" x 6"D

CS1060M: 6"W x 21" x 6"D

CS1060L: 6"W x 23.5" x 6"D

© 2003 PAUL GRÜER



GUILLOT SI 1135 BOWL

ANTIQUÉ GOLD LEAF FINISH DISTINGUISHES THIS UNIQUE ACCENT BOWL. DETAILED WITH SILVER BOTTOM

28"W x 6.5"H x 10"D

© 2007 BENJAMIN BURTS



ZEUS
MR1002 MIRROR

A FLAME FINIAL CROWNS THIS TRIANGULAR MIRROR, GROUNDED WITH BALL FINIALS. THE FRAME IS FINISHED WITH GRAY AND BLACK STRIPE PAINT AND COLOR WASH, THEN TRIMMED IN GOLD LEAF

22"W X 32"H
© 2002 PAUL GRÜER



FLAMBEAU

Lighting...New Orleans Style

The Designers



Paul
Grüer

"I have always been influenced by the city of New Orleans. The patina of age and gentle decay has found its way into the finish of my work. Like the city, sophisticated, fun and always just a little off-center".

Whether as an art gallery director, sculptor, or designer of fine jewelry, this long-time resident of the "Big-Easy" and his work, have for years been an integral part of the New Orleans art scene. Chosen as the top artist in New Orleans and recipient of the WYES Patron Artist Award, Grüer has also been nationally recognized winning Alpha Awards for his textile and lighting designs.

Grüer's use of lighting as an expression of his creativity first came about when a friend challenged him to create a chandelier to look like a pair of earrings he had designed for her. Pleased with the results, he soon began creating other sculptural lighting pieces inspired by his jewelry designs, and for years, these one-of-a-kind custom pieces were commissioned and sold only through a hand full of select art galleries and interior designers. In 2001, Grüer entered into a licensing agreement with Flambeau Lighting to create an ongoing series that would be crafted and finished by artisans, in much the same manner as his original Studio pieces.

Today, Paul Grüer's "FLAMBEAU Lighting Collection" is a gallery of sculptural, functional art that manifests itself in the form of table lamps, floor lamps, chandeliers, pendants, mirrors and sconces. He has created a collection that is certain to add intrigue to any interior design.



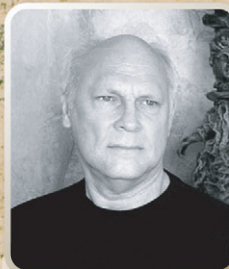
Elaine
Gleason

Elaine Gleason designs and constructs striking lighting fixtures for both residential and commercial interiors. These sculptures are inspired by the rhythm and ambiance of her native New Orleans.

For 10-years Gleason has focused on the design and manufacture of metal furniture and lighting at her New Orleans studio. Her designs are evocative of the culture she lives in; the classic architecture, the indigenous music, and lush foliage that saturates New Orleans.

Gleason's art has been shown at the New Orleans Jazz Fest, Art in Bloom at the New Orleans Museum of Art, D.O.C.S. Gallery, New Orleans Academy of Fine Art, Philadelphia Rosen Show, as well as at the International Atlanta Gift Show, New York International Gift Show and the High Point Furniture Market.

She studied art at the University of Arizona, and received here BFA degree, with a focus on Sculpture, from the University of Georgia.



Benjamin
Burts

There is a life force palpable in every Benjamin Burts creation. From a genesis of cold clay evolve works of art that exude an almost human warmth and texture. Burts says he doesn't put it there; he says it is there.

"I work with clay in a very free, spontaneous way, allowing it to become what it wants to become. I start with an idea, but the idea only motivates me to begin. Then it becomes a collaboration between the clay and me to see what it is supposed to be," says Burts.

Faces and spiritual forms rise ethereally to the surface in many of his designs and through a unique surfacing technique after kiln firing, he applies gold and silver coloring, "colors natural to the surface, shape and form," remarks Burts.

His work has been exhibited in fine galleries across the USA. He is inspired by neoclassic design blended with the culture of the New Orleans Garden district.

FLAMBEAULIGHTING.COM

INDEX

ACCESSORIES

CON1050	93
CT1050	92
MR1002	95
SI1050	93
SI1135	94
ST1050	92
TA1060L	94
TA1060M	94
TA1060S	94

CHANDELIERS

CH1009	10
CH1015	11
CH1015-1	11
CH1016	9
CH1035	9
CH1040	6
CH1109	14
CH1110	7
CH1111	5
CH1141-3	17
CH1141-5	17
CH1141-8	16
CH1143-6	22
CH1153-4	25
CH1154-4	14
CH1158-10	13
CH1159-3	15
CH1159-6	15
CH1160-3	19
CH1160-5	19
CH1160-8	18
CH1162-6	23
CH1163-4B	21
CH1163-4S	21

FLOOR LAMPS

FL1006	89
FL1009	91
FL1013	89
FL1013-G	89
FL1019	90
FL1024-G	91
FL1024-S	91
FL1048	90
FL1048-G	90

LANTERNS

LAN1143-3	26
LAN1154-4	26
LAN1163-BLACK	27
LAN1163-SILVER	27

PENDANTS

PD1004	39
PD1006	36
PD1006-MINI	36
PD1019	31
PD1031	39
PD1040	40
PD1052D - GOLD	32
PD1052-DRUM	33
PD1052-S	35
PD1052S - GOLD	35
PD1055-L	37
PD1055-S	37
PD1163-BLACK	41
PD1163-SILVER	41
PD1166-S	40

SCONCES

SC1009-1	51
SC1012	52
SC1015-1	51
SC1040	57
SC1045	47
SC1046	49

SC1052	46
SC1052-G	46
SC1055	47
SC1106	49
SC1138-1	55
SC1138-3	55
SC1140-1	54
SC1140-3	54
SC1148-1	48
SC1148-2	48
SC1153-1	52
SC1158-3	53
SC1159-2	53
SC1170	45
SC1171	45
SC1172	44
SC1173	44

TABLE LAMPS

TA1002	69
TA1004	61
TA1006	71
TA1008	69
TA1009	71
TA1013	63
TA1013-S	63
TA1016	74
TA1017	70
TA1017-S	70
TA1018	77
TA1023	73
TA1024	65
TA1026	72
TA1027	74
TA1030	67
TA1030-S	67
TA1031	75
TA1032	64
TA1037	78
TA1038	68
TA1038-S	68

TA1045	61
TA1057	65
TA1058	79
TA1059	79
TA1074	64
TA1075	73
TA1077	78
TA1078	72
TA1098	77
TA1100	76
TA1101	75
TA1104	86
TA1104-S	86
TA1106	76
TA1113	84
TA1113-G	84
TA1117	82
TA1118	80
TA1118-S	80
TA1119	81
TA1119-S	81
TA1120	85
TA1121	84
TA1122	82
TA1123	85
TA1126	60
TA1126-M	60
TA1127	85
TA1129	83
TA1130	87
TA1131	88
TA1132	88
TA1134	87
TA1136	87
TA1139	83





FLAMBEAU

Lighting...New Orleans Style

11410 CEDAR PARK AVE. BATON ROUGE, LA 70809

1-800-407-9008 • FLAMBEAULIGHTING.COM



FACEBOOK.COM/FLAMBEAULIGHTING